



PRINCES COURT,
KNIGHTSBRIDGE, SW3
£2,900 Per Month

T. +44 (0) 20 7935 0011
E. enquire@napierwatt.co.uk
WWW.NAPIERWATT.CO.UK

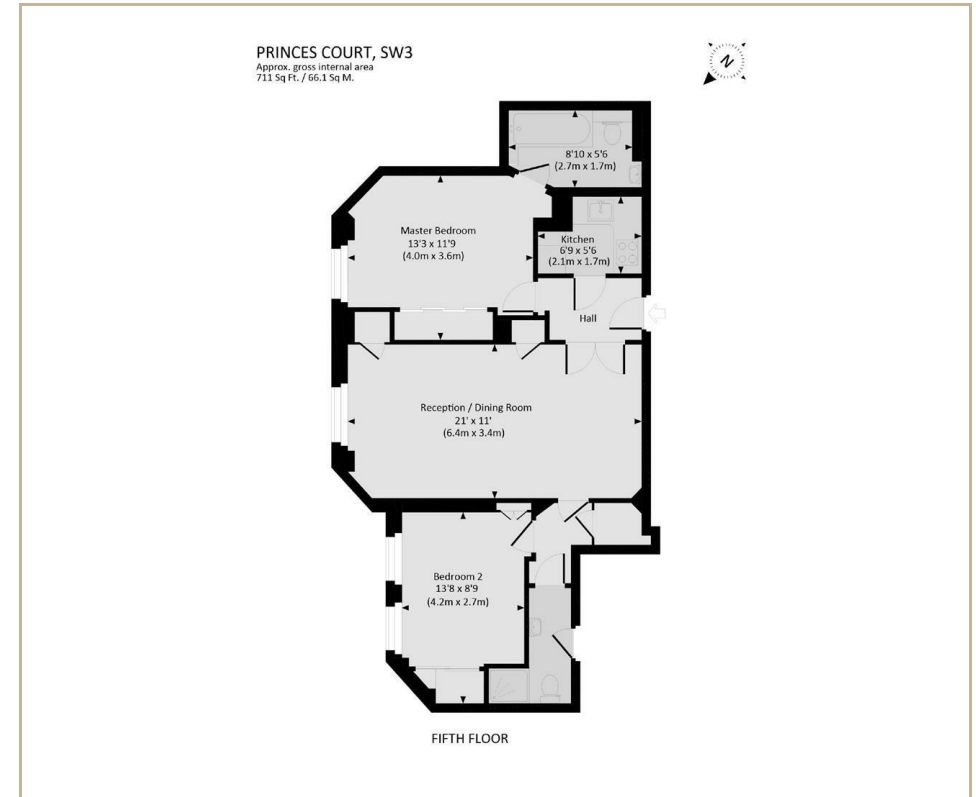
NAPIER WATT
PROPERTY CONSULTANTS

Description

This bright, newly decorated two bedroom, two bathroom apartment (711 sq ft / 66.1 sq m) is located on the fifth floor of this purpose-built apartment block opposite Harrods.

The property benefits from a spacious reception room / dining area, separate kitchen and two double bedrooms, both with en suite bathrooms.

Princes Court benefits from 24 hour portage and security and is located on the Brompton Road directly opposite Harrods and is ideally located for Knightsbridge, Sloane Street and Hyde Park. The property would make an ideal family residence, pied-à-terre.



TERMS

Fees & Charges: Tenancies exceeding £100,000 Per annum £480 inc VAT, Tenancies where a company is a tenant £480 inc VAT.

For Clarification we wish to inform prospective purchasers that we have prepared these sales particulars as a general guide. We have not carried out a survey, nor tested the services, appliances and specific fittings. Room sizes are approximate and rounded: they are taken between internal wall surfaces and therefore include cupboards/shelves, etc. Accordingly, they should not be relied upon for carpets and furnishings. Formal notice is given that all fixtures and fittings, carpeting, curtains/blinds and kitchen equipment, whether fitted or not, are deemed to be removable by the vendor unless specifically itemised within these sales particulars.

T. +44 (0) 20 7935 0011
E. enquire@napierwatt.co.uk
WWW.NAPIERWATT.CO.UK

NAPIER WATT
PROPERTY CONSULTANTS